

DAILY RESEARCH, 11 MEI 2020

PT PROFINDO SEKURITAS INDONESIA

**GD PERMATA KUNINGAN LT 19
JL KUNINGAN MULIA KAV 9C GUNTUR SETIABUDI JAKARTA SELATAN 12980**

TELP +62 21 8378 0888

EMAIL : CUSTOMERSERVICE@PROFINDO.COM

WWW.PROFINDO.COM | PROCLICK.PROFINDO.COM

MARKET MOVERS



Bursa Amerika ditutup menguat didorong rilis data pengangguraj AS yang lebih kecil dari ekspektasi. DOW +1.91%, S&P +1.69%, NASDAQ +1.58%

Bursa saham Eropa ditutup kompak menghijau meredanya ketegangan antara US China dan menjelang rilis data tenaga kerja AS. Indeks FTSE +1.40%, DAX +1.35%, CAC +1.07%

Bursa Saham Asia dibuka mayoritas menguat didorong mulai kembalinya aktivitas ekonomi di beberapa negara. Indeks Hang Seng +1.89%, Shanghai +0.53%, Nikkei +1.62%, KOSPI +0.41%, STI +0.31%

Harga minyak ditutup menguat didorong kebijakan pelonggaran lockdown yang dilakukan banyak negara diharapkan mampu menggerakkan perekonomian kembali dan akan menaikkan permintaan akan minyak mentah dunia. Harga CPO dilaporkan rebound 2%an seiring dengan menurunnya stok persediaan Sawit Indonesia yang menurun. WTI +2.26%, Brent Oil -1.42%, Gold -0.10%. CPO +3.8%

IHSG pada perdagangan hari ini diperkirakan akan **BULLISH** dengan Range pergerakan **4570-4720** dengan saham-saham yang dapat diperhatikan : **ANTM GIAA TCPI WEGE ERAA PGAS**

MARET DATA

AMERIKA

DOW 30	24,331.32	+455.43	+1.91%
S&P 500	2,929.80	+48.61	+1.69%
NASDAQ	9,121.32	+141.66	+1.58%

EUROPE

DAX	10,904.48	+145.21	+1.35%
FTSE 100	5,935.98	+82.22	+1.40%
CAC 40	2,908.11	+27.51	+0.95%

ASIA

SHANGHAI	2,901.57	+6.23	+0.22%
HANGSENG	24,230.17	+249.54	+1.04%
SET	1,266.02	+8.04	+0.64%
KOSPI	1,950.92	+5.10	+0.26%
JCI	4,597.43	-11.36	-0.25%
NIKKEI	20,434.00	+254.91	+1.26%
STI	2,591.41	-0.47	-0.02%

COMMODITIES

GOLD	1,709.20	-4.70	-0.27%
WTI OIL	24.05	-0.69	-2.79
BRENT OIL	30.31	-0.57	-1.85%
COAL	53.30	+0	+0 %
PALM OIL	2020	+74	+3.8%
TINS	15,322.50	+142.50	+0.94%
NICKEL	12,490.00	+205.00	+1.67%

EVENT & ECONOMIC CALENDER

ECONOMIC CALENDER :

GLOBAL

120520	US CORE CPI (MoM) (APR)
130520	UK GDP (YoY) (QoQ)
	UK MANUFACTURING PRODUCTION (MoM) (MAR)
	US PPI (MoM) (APR)
	US CRUDE OIL INVENTORIES
140520	US INITIAL JOBLESS CLAIMS
	CHINA INDUSTRIAL PRODUCTIONS (YoY) (APR)
150520	GERMAN GDP (QoQ) (Q1)
	US RETAIL SALES (MoM) (APR)
	US JOBS OPENING (MAR)

CORPORATE ACTION :

DEVIDEN

110520	SDRA RP 13 (CUM 1105, PAYMENT 1805)
120520	XSPI RP 12.8 (CUM 1205, PAYMENT 1905)
	AKRA RP 50 (CUM 1205, PAYMENT 0306)
150520	XISB RP 0.94 (CUM DATE 1505, PAYMENT 2805)

RUPS

1205	WSBP RBMS NZIA KINO
1405	SSIA RAJA MIDI AMRT
1505	PYFA MLPT CENT

IPO

RIGTH ISSUE

WARRANT

JAKARTA COMPOSITE INDEX



PREVIOUS 8 MEI 2020

CLOSING	4597.430	-0.246%
TRANSACTION	IDR 6.6 TRILLION	
FOREIGN NETT	IDR 812 BIO (SELL)	

PREDICTION 11 MEI 2020

BULLISH
RANGE 4600-4720

BOTTOM FISHING
STOCHASTIC : OVERSOLD
MACD : HISTOGRAM POSITIF DAN UPTREND

TECHNICAL RECOMENDATION



ANTM – PT ANEKA TAMBANG TBK

CLOSING 8/5/2020 RP 535 (+7.0%)

**SELL ON STRENGTH
TAKE PROFIT 565**

**BREAK OUT TRIANGLE
STOCHASTIC : UPTREND
MACD : HISTOGRAM POSITIF DAN GOLDEN CROSS**

TECHNICAL RECOMENDATION



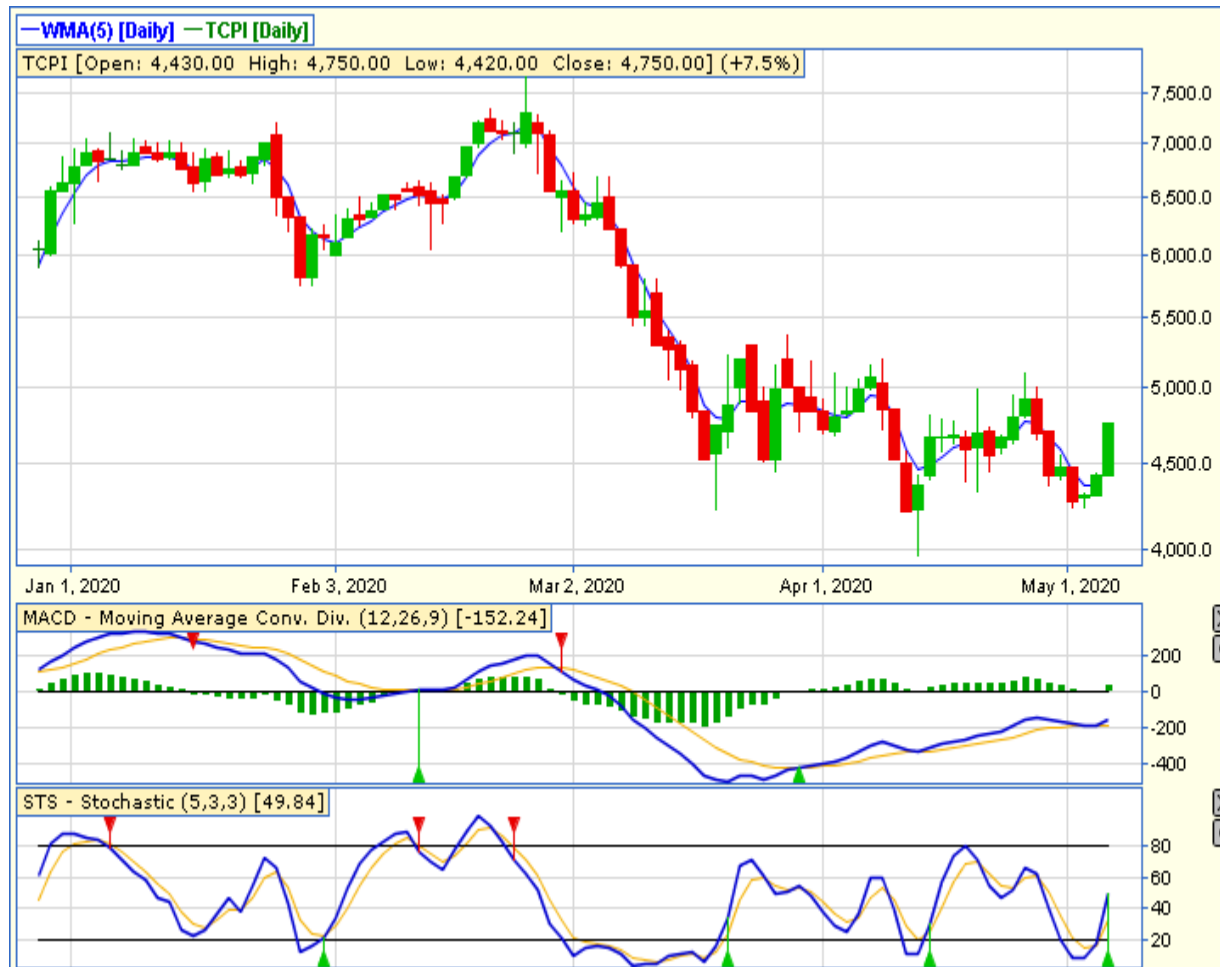
GIAA – PT GARUDA INDONESIA (PERSERO) TBK

CLOSING 8/5/2020 RP 246 (+19.4%)

**SELL ON STRENGTH
TAKE PROFIT 268**

BREAK OUT DOUBLE BUTTOM
STOCHASTIC : UPTREND
MACD : HISTOGRAM POSITIF DAN UPTREND

TECHNICAL RECOMENDATION



TCPI – PT TRANSCOAL PACIFIC TBK

CLOSING 8/5/2020 RP 4750 (+7.5%)

BUY

TARGET PRICE 5100

STOPLOSS < 4640

TWO WHITE SOLDIERS

STOCHASTIC : UPTREND

MACD : HISTOGRAM POSITIF DAN UPTREND

TECHNICAL RECOMENDATION



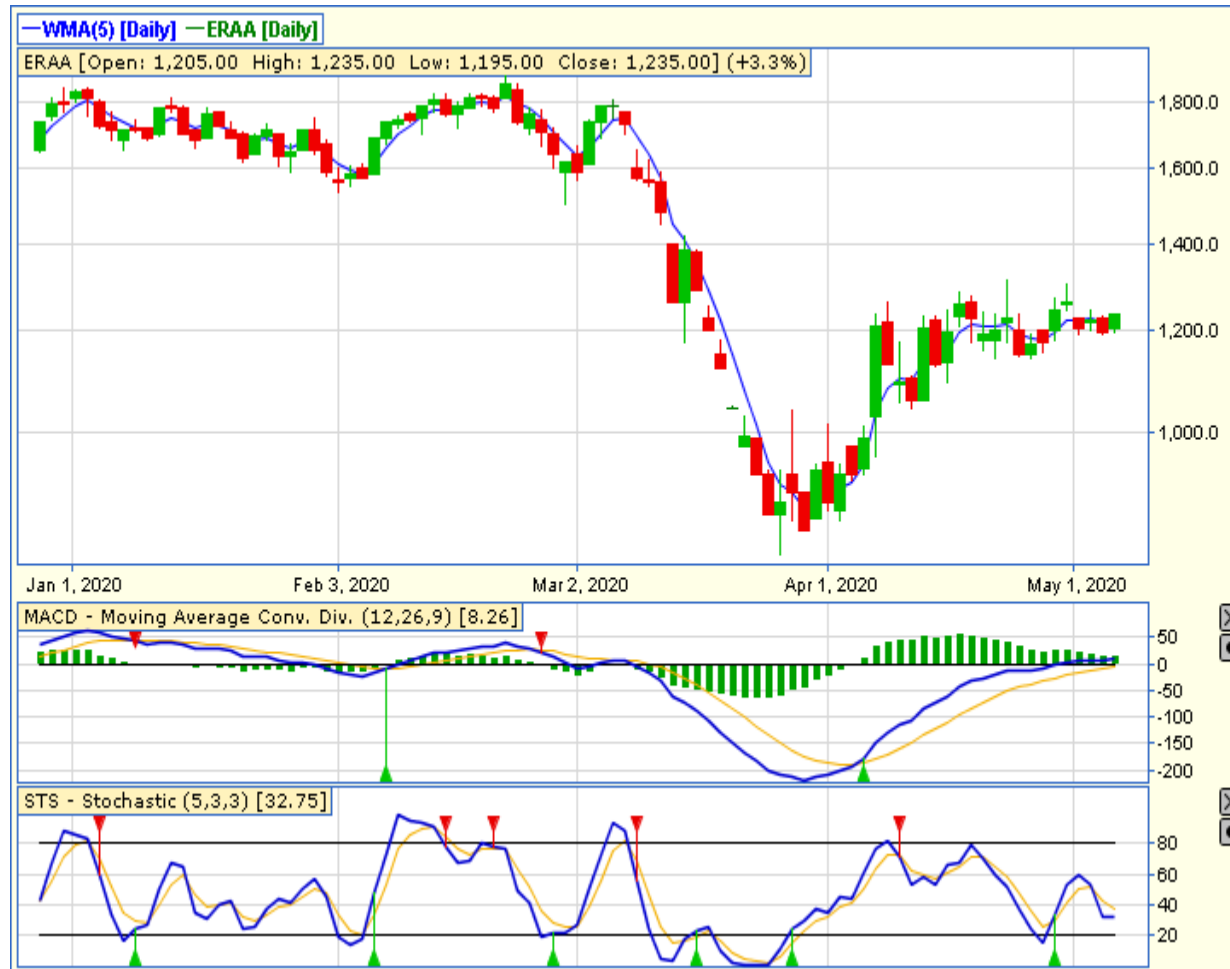
**WEGE – PT WIJAYA KARYA BANGUNAN GEDUNG
TBK**

CLOSING 8/5/2020 Rp 167 (+3.1%)

BUY
TARGET PRICE 177
STOPLOSS < 164

BREAK OUT TRIANGLE
STOCHASTIC : UPTREND
MACD : HISTOGRAM POSITIF DAN UPTREND

TECHNICAL RECOMENDATION



ERAA – PT ERAJAYA SWASEMBADA TBK

CLOSING 8/5/2020 RP 1235 (+3.3%)

BUY

TARGET PRICE 1300

STOPLOSS 1225

BREAK OUT TRIANGLE

STOCHASTIC : OVERSOLD

MACD : HISTOGRAM POSITIF DAN UPTREND

TECHNICAL RECOMENDATION



PGAS – PT PERUSAHAAN GAS NEGARA TBK

CLOSING 8/5/2020 RP 860 (+5.5%)

BUY

TARGET PRICE 950

STOPLOSS < 850

BREAK OUT TRIANGLE

STOCHASTIC : UPTREND

MACD : HISTOGRAM POSITIF DAN UPTREND

RESEARCH TEAM



YULIANA

**RESEARCH ANALYST &
CORPORATE FINANCE**



DIMAS WP PRATAMA, CSA

TECHNICAL ANALYST

EQUITY CAPITAL MARKET TEAM



JESSIE JAMES

HEAD OF EQUITY SALES



PRASETYO NUGROHO

HEAD OF DEALING ROOM



GABRIELLA PRATIWY

HEAD OF ONLINE TRADING